

# The Immaculate Conception of the Blessed Virgin Mary

## Gospel Acclamation

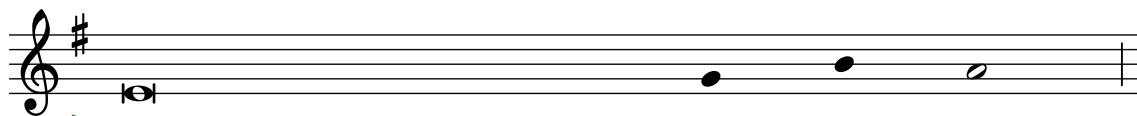
### RESPONSE



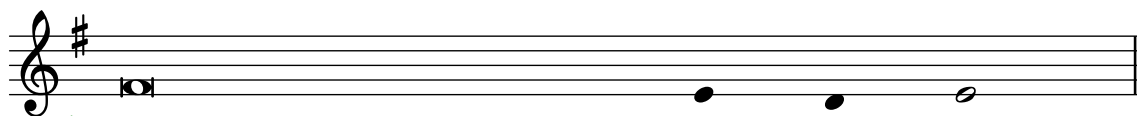
℞. Al-le-lu-ia, al-le - lu-ia, al-le-lu-ia, al-le - lu-ia!

### VERSICLE Psalm Tone: A

Luke 1: 28



℣. Hail, Mary, full of grace, the Lord is with you;



℣. blessed are you a - mong women.

Versicle text: "Lectionary for Mass", © 1969, 1981, ICEL. All rights reserved.

Response music: VENI EMMANUEL; Chant, Mode I: "Processionale", French, 15th cent.; adapt. by Thomas Helmore, 1811-1890.

Psalm tone: www.liturgysare.org; © 2022. All rights reserved. Used under a Creative Commons Attribution-Noncommercial 4.0 International License.